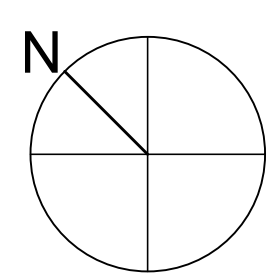


GreenStar @ 770 Cascadilla St. Main Floor Plan

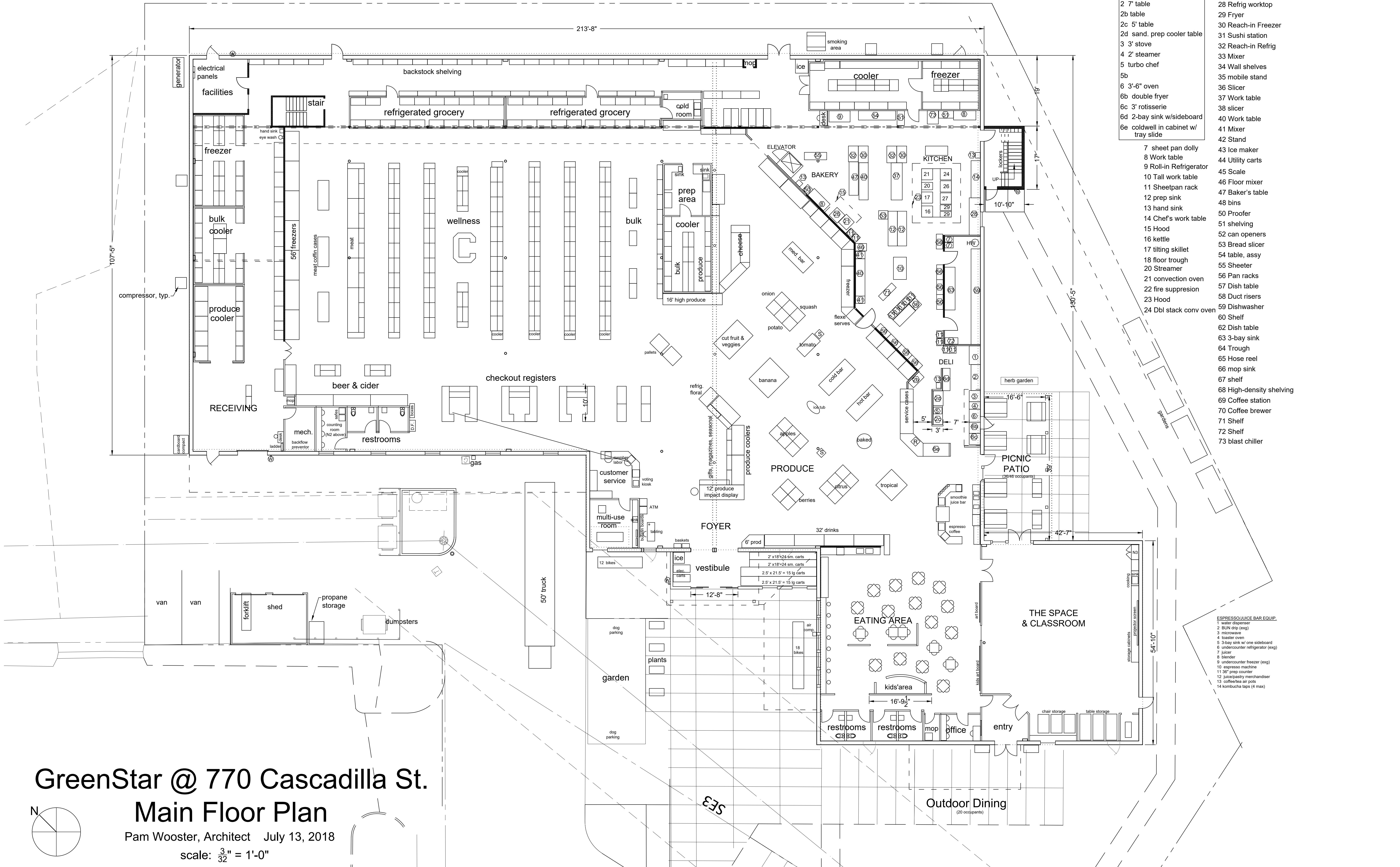
Pam Wooster, Architect July 13, 2018

scale: $\frac{3}{32}'' = 1'-0''$



- Equipment from West End
- 1 5' freezer
 - 2 7' table
 - 2b table
 - 2c 5' table
 - 2d sand. prep cooler table
 - 3 3' stove
 - 4 2' steamer
 - 5 turbo chef
 - 6 3-6" oven
 - 6b double fryer
 - 6c 3' rotisserie
 - 6d 2-bay sink w/sideboard
 - 6e coldwell in cabinet w/ tray slide
 - 7 sheet pan dolly
 - 8 Work table
 - 9 Roll-in Refrigerator
 - 10 Tall work table
 - 11 Sheetpan rack
 - 12 prep sink
 - 13 hand sink
 - 14 Chef's work table
 - 15 Hood
 - 16 kettle
 - 17 tilting skillet
 - 18 floor trough
 - 20 Streamer
 - 21 convection oven
 - 22 fire suppression
 - 23 Hood
 - 24 Dbl stack conv oven
 - 26 Range
 - 27 Charbroiler
 - 28 Refrig worktop
 - 29 Fryer
 - 30 Reach-in Freezer
 - 31 Sushi station
 - 32 Reach-in Refrig
 - 33 Mixer
 - 34 Wall shelves
 - 35 mobile stand
 - 36 Slicer
 - 37 Work table
 - 38 slicer
 - 40 Work table
 - 41 Mixer
 - 42 Stand
 - 43 Ice maker
 - 44 Utility carts
 - 45 Scale
 - 46 Floor mixer
 - 47 Baker's table
 - 48 bins
 - 50 Proofer
 - 51 shelving
 - 52 can openers
 - 53 Bread slicer
 - 54 table, assy
 - 55 Sheeter
 - 56 Pan racks
 - 57 Dish table
 - 58 Duct risers
 - 59 Dishwasher
 - 60 Shelf
 - 62 Dish table
 - 63 3-bay sink
 - 64 Trough
 - 65 Hose reel
 - 66 mop sink
 - 67 shelf
 - 68 High-density shelving
 - 69 Coffee station
 - 70 Coffee brewer
 - 71 Shelf
 - 72 Shelf
 - 73 blast chiller

- ESPRESSO/JUICE BAR EQUIP.
- 1 water dispenser
 - 2 BUN drip (exg)
 - 3 microwave
 - 4 toaster oven
 - 5 3-bay sink w/ one sideboard
 - 6 undercounter refrigerator (exg)
 - 7 juicer
 - 8 blender
 - 9 undercounter freezer (exg)
 - 10 espresso machine
 - 11 18" prep counter
 - 12 juice/bakery merchandiser
 - 13 coffee/tea air pots
 - 14 kombucha taps (4 max)



SEE

Outdoor Dining
(20 occupants)